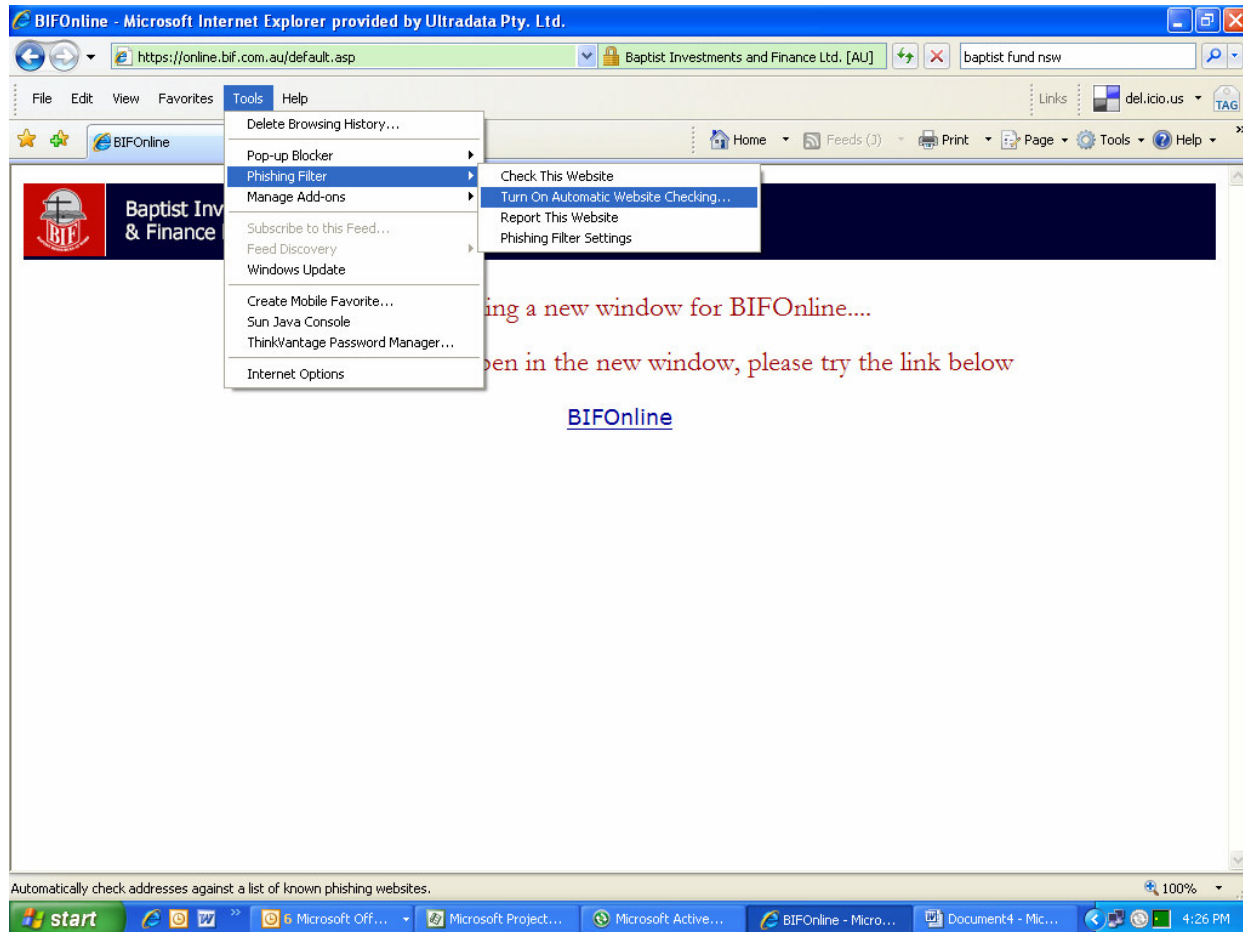


How to see the green “Address Bar” in Internet Explorer 7.0

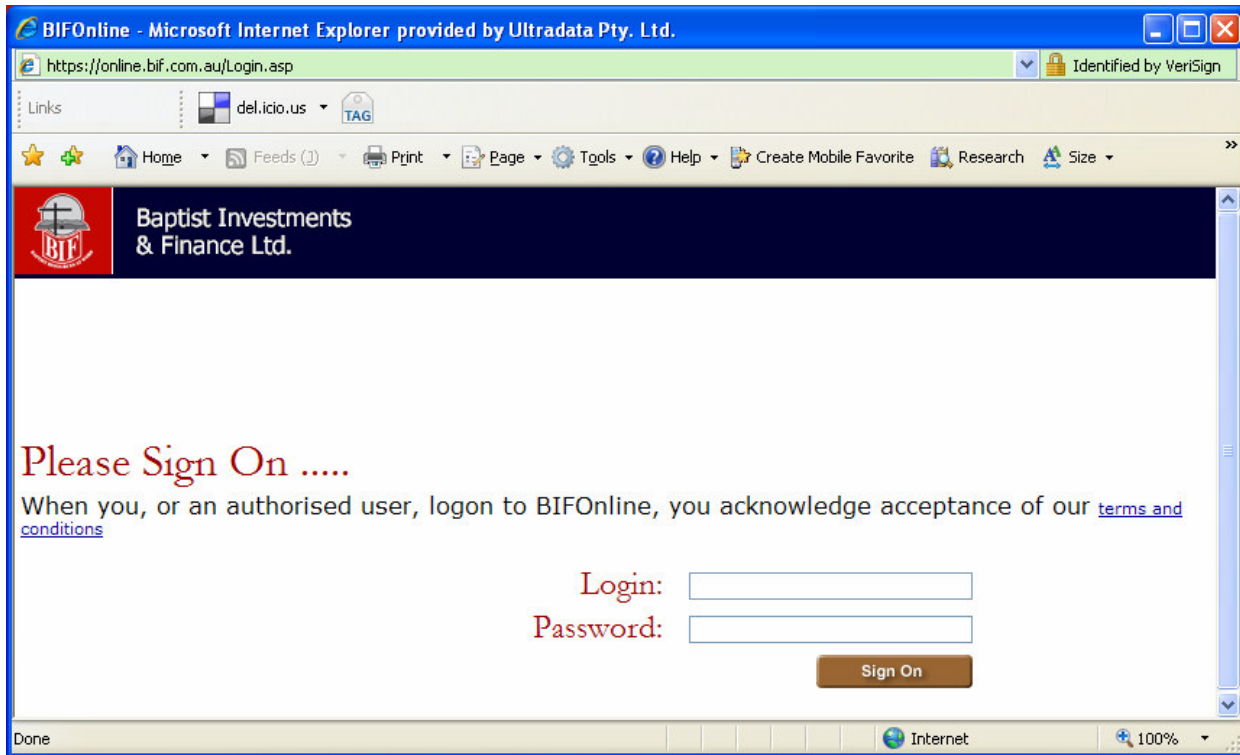
Notes:

- If you are using Windows Vista (the latest version of Microsoft Windows) with Internet Explorer 7.0 (IE7) you will not need to perform the following.
- The following will only work with IE7 on Windows XP and will NOT work with IE6 on Windows XP.

Step 1 – You need to turn on the “Automatic Website Checking...” option which you can get to from the Tools → Phishing Filter menu option from within Internet Explorer 7



Step 2 – If you now go to one of your pages secured by your new certificate (e.g. on with the ‘S’ on the HTTPS) <https://online.bif.com.au/default.asp> you should see the green bar as per the screen shot below.



What do the colours mean?

Green

https only. Known high authentication. Encrypted.

Clear

https optional. Unknown-authentication level.
Possible encryption.

Yellow

https optional. Unknown authentication level. Site
contains suspicious properties. Possible encryption.

Red

https optional. Identified as phishing site or contains
known certificate error. Possible encryption.